

### FLOOR PLAN NOTES

1. THE CONDITIONS OF APPROVAL AND THE CC&RS FOR THE PROJECT SHALL EXPLICITLY FORBID THE INSTALLATION OF ANY NON-EPA PHASE 2 CERTIFIED WOOD BURNING DEVICES OR MASONRY FIREPLACES THAT DO NOT HAVE A UL APPROVED DECORATIVE GAS BURNING APPLIANCE THAT USES EITHER A DIRECT VENT OR B VENT FLUE SYSTEM, UNLESS OTHERWISE AGREED TO BY THE PCAPCD AND IS CONSISTENT WITH THE MARTIS VALLEY AIR QUALITY ORDINANCE. SOLID FLUE BURNING APPLIANCES/FIREPLACES ARE PROHIBITED IN MULTI-FAMILY LAND USES. THE MAXIMUM EMISSION POTENTIAL FROM EACH RESIDENCE SHALL NOT EXCEED 7.5 GRAMS PER HOUR.
2. TRASH ROOM SHALL COMPLY WITH PLACER COUNTY'S BEAR-RESISTANT ENCLOSURE ORDINANCE. THE REFUSE CONTAINER IS BUILT ON A CONCRETE SLAB AND WILL BE ACCESSED VIA A METAL DOOR WITH ACCOMPANYING METAL FRAME AND LATCHED WITH A YEAR-ROUND DOOR KNOB WITH SECONDARY LATCH. THE INTERIOR MUST BE FINISHED WITH SHEETROCK, INSIDE WEATHER STRIPPING, AND A PAINTED FINISH.
3. GROUND FLOOR: 2,521 GSF

### POWER LEGEND/OUTLINE SPEC

- ⊕ DUPLEX RECEPTACLE @ 12" A.A.F. UNLESS OTHERWISE NOTED
- ⊕ DEDICATED APPLIANCE RECEPTACLE
- ⊕ GROUND FAULT INTERRUPT RECEPT. WITH WATERPROOF COVER AT EXTERIOR
- ⊕ 220V RECEPTACLE
- ⊕ GROUND FAULT INTERRUPT RECEPT.
- ⊕ DATA JACK / TELEPHONE
- ⊕ TELEVISION CABLE OUTLET
- ⊕ GAS CONNECTION
- ⊕ GARBAGE DISPOSAL
- ⊕ RECESSED DUPLEX FLOOR RECEPT.



ZAK ARCHITECTURE  
 245 VALLEJO STREET  
 SAN FRANCISCO, CA 94111  
 415-705-6200  
 415-705-6215  
 www.zakarchitecture.com

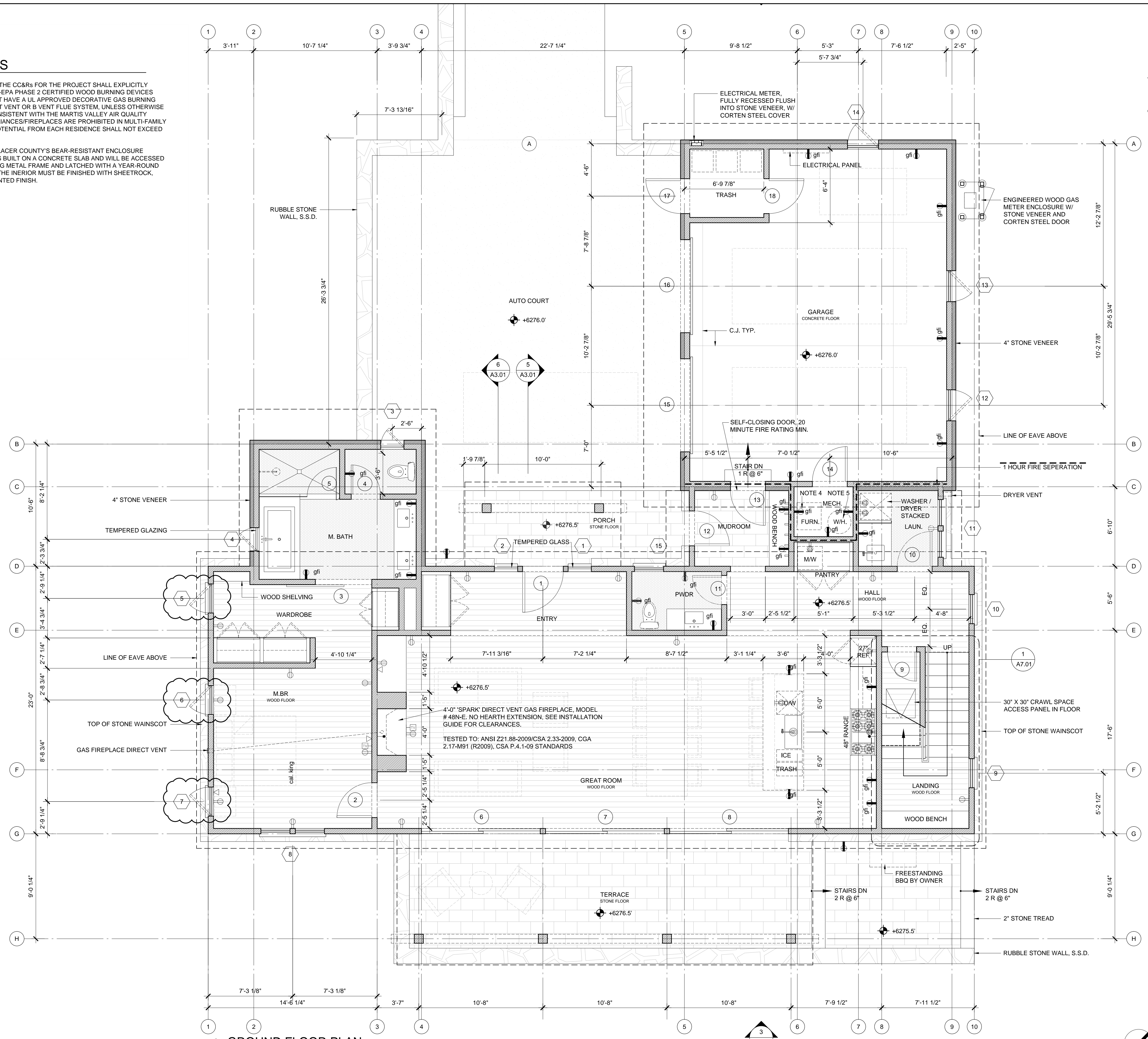
LOT 309  
 APN: 106 380 002

This work was prepared by me or under my supervision. Construction of this project will be under my observation.

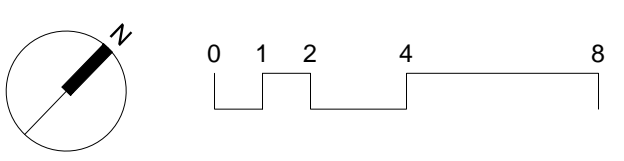
DATE	ISSUE
04/24/13	CONCEPTUAL DESIGN
06/04/13	CONCEPTUAL DESIGN II
07/02/13	PRELIMINARY DESIGN
08/09/13	PERMIT

### GROUND FLOOR PLAN

DATE: 08.09.13  
 SCALE: 1/4" = 1'-0"  
 DRAWN: GH-DJ  
**A2.01**



**1** GROUND FLOOR PLAN  
 SCALE: 1/4" = 1'-0"



**FLOOR PLAN NOTES**

1. THE CONDITIONS OF APPROVAL AND THE CC&Rs FOR THE PROJECT SHALL EXPLICITLY FORBID THE INSTALLATION OF ANY NON-EPA PHASE 2 CERTIFIED WOOD BURNING DEVICES OR MASONRY FIREPLACES THAT DO NOT HAVE A UL APPROVED DECORATIVE GAS BURNING APPLIANCE THAT USES EITHER A DIRECT VENT OR B VENT FLUE SYSTEM, UNLESS OTHERWISE AGREED TO BY THE PCAPCD AND IS CONSISTENT WITH THE MARTIS VALLEY AIR QUALITY ORDINANCE. SOLID FLUE BURNING APPLIANCES/FIREPLACES ARE PROHIBITED IN MULTI-FAMILY LAND USES. THE MAXIMUM EMISSION POTENTIAL FROM EACH RESIDENCE SHALL NOT EXCEED 7.5 GRAMS PER HOUR.

2. TRASH ROOM SHALL COMPLY WITH PLACER COUNTY'S BEAR-RESISTANT ENCLOSURE ORDINANCE. THE REFUSE CONTAINER IS BUILT ON A CONCRETE SLAB AND WILL BE ACCESSED VIA A METAL DOOR WITH ACCOMPANYING METAL FRAME AND LATCHED WITH A YEAR-ROUND DOOR KNOB WITH SECONDARY LATCH. THE INTERIOR MUST BE FINISHED WITH SHEETROCK, INSIDE WEATHER STRIPPING, AND A PAINTED FINISH.

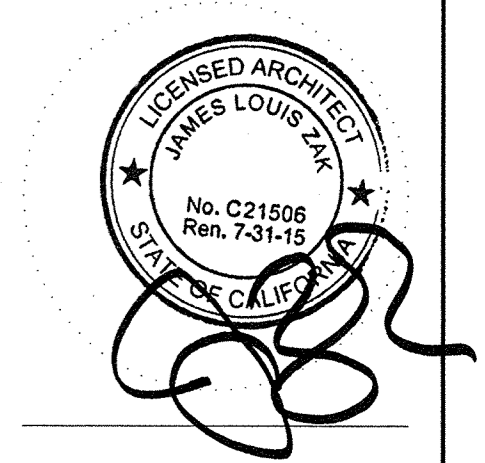
3. SECOND FLOOR: 1,607 GSF

ZAK

ZAK ARCHITECTURE  
245 VALLEJO STREET  
SAN FRANCISCO, CA 94111  
415-705-6200  
415-705-6215  
www.zakarchitecture.com

LOT 309  
APN: 106 380 002

This work was prepared by me or under my supervision. Construction of this project will be under my observation.



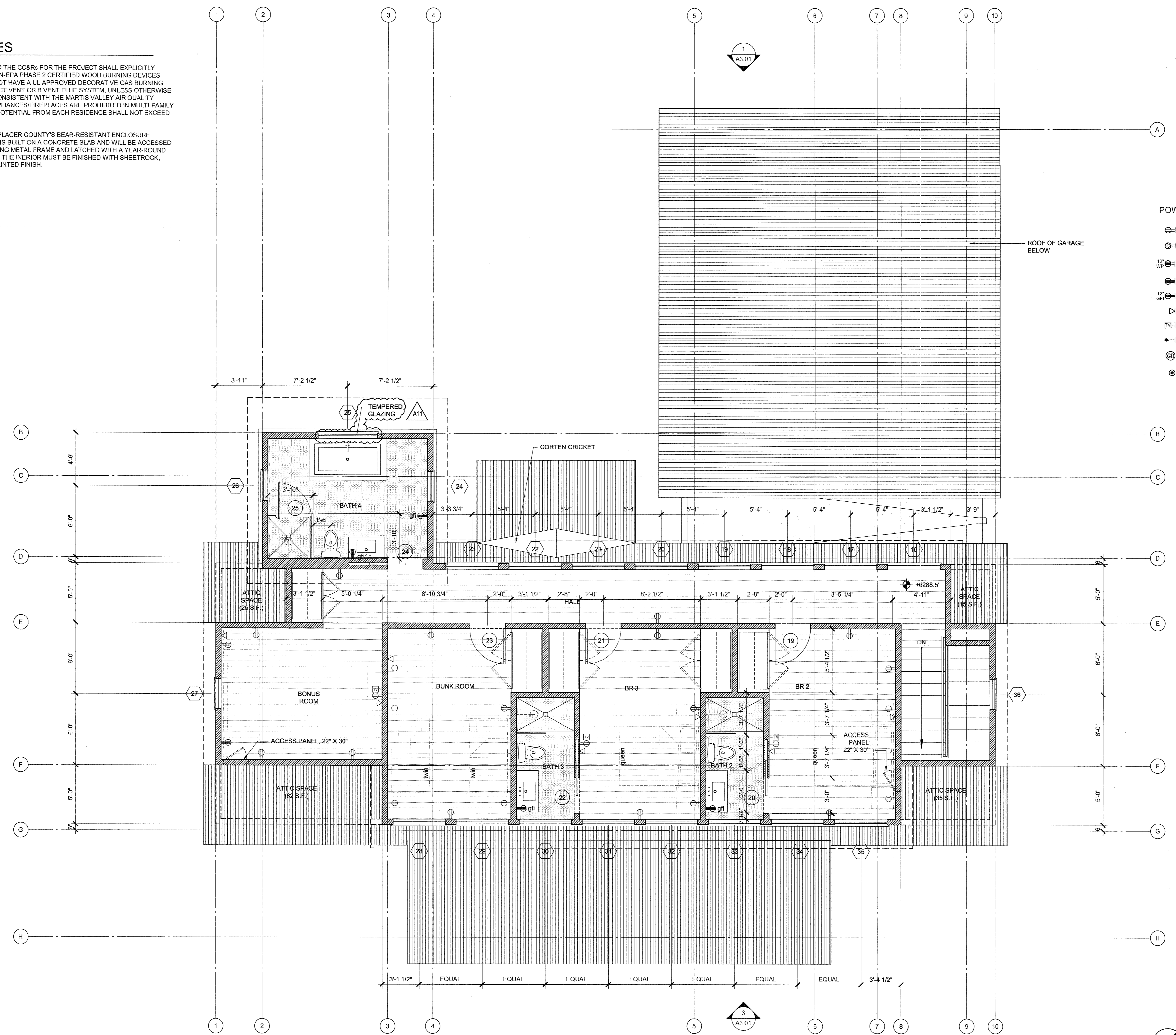
DATE	ISSUE
04/24/13	CONCEPTUAL DESIGN
06/04/13	CONCEPTUAL DESIGN II
08/02/13	PRELIMINARY DESIGN
08/09/13	PERMIT
09/23/13	PERMIT RE-SUBMIT

**REVIEWED FOR CODE COMPLIANCE**  
Approval of these plans and specifications shall not be construed to be a permit for, or an approval of, any violation of any Federal, State, County or City laws or ordinance.

**RECEIVED**  
OCT 24 2013  
BLDG. DEPT.  
51709-13

2ND FLOOR PLAN

DATE: 08.09.13  
SCALE: 1/4" = 1'-0"  
DRAWN: GH-DJ  
A2.02



- POWER LEGEND/OUTLINE SPEC**
- ⊕ DUPLEX RECEPTACLE @ 12" A.A.F. UNLESS OTHERWISE NOTED
  - ⊕ DEDICATED APPLIANCE RECEPTACLE
  - ⊕ GROUND FAULT INTERRUPT RECEPT. WITH WATERPROOF COVER AT EXTERIOR
  - ⊕ 220V RECEPTACLE
  - ⊕ GROUND FAULT INTERRUPT RECEPT.
  - ⊕ DATA JACK / TELEPHONE
  - ⊕ TELEVISION CABLE OUTLET
  - ⊕ GAS CONNECTION
  - ⊕ GARBAGE DISPOSAL
  - ⊕ RECESSED DUPLEX FLOOR RECEPT.

**2 SECOND FLOOR PLAN**  
SCALE: 1/4" = 1'-0"

