

# MAIN FLOOR



- 1 - AUTO COURT
- 2 - ENTRY PORCH
- 3 - FOYER
- 4 - GREAT ROOM
- 5 - DINING/WET BAR
- 6 - KITCHEN
- 7 - DINING PATIO
- 8 - FIRESIDE PATIO
- 9 - BUTLER PANTRY/DUAL SUB-ZERO WINE FRIDGES
- 10 - PANTRY
- 11 - BEDROOM/OFFICE #3
- 12 - BEDROOM/OFFICE #3 BATH
- 13 - POWDER BATH
- 14 - LAUNDRY ROOM
- 15 - MUD ROOM
- 16 - MECHANICAL
- 17 - 2 CAR GARAGE + CART/TOY BAY
- 18 - MASTER SUITE #1
- 19 - MASTER SUITE #1 CLOSET
- 20 - MASTER SUITE #1 BATH
- 21 - MASTER SUITE #1 PATIO
- 22 - SPA PATIO
- 23 - TRASH ENCLOSURE

**SQUARE FOOTAGE CALCS:**

MAIN LEVEL FINISHED: 2,407 S.F.  
 UPPER LEVEL FINISHED: 1,754 S.F.  
**TOTAL FINISHED: 4,161 S.F.**

OUTDOOR LIVING SPACE 1,394 S.F.  
 MECH & STORAGE 48 S.F.  
 GARAGE: 852 S.F.



HOME 458  
 MARTIS CAMP



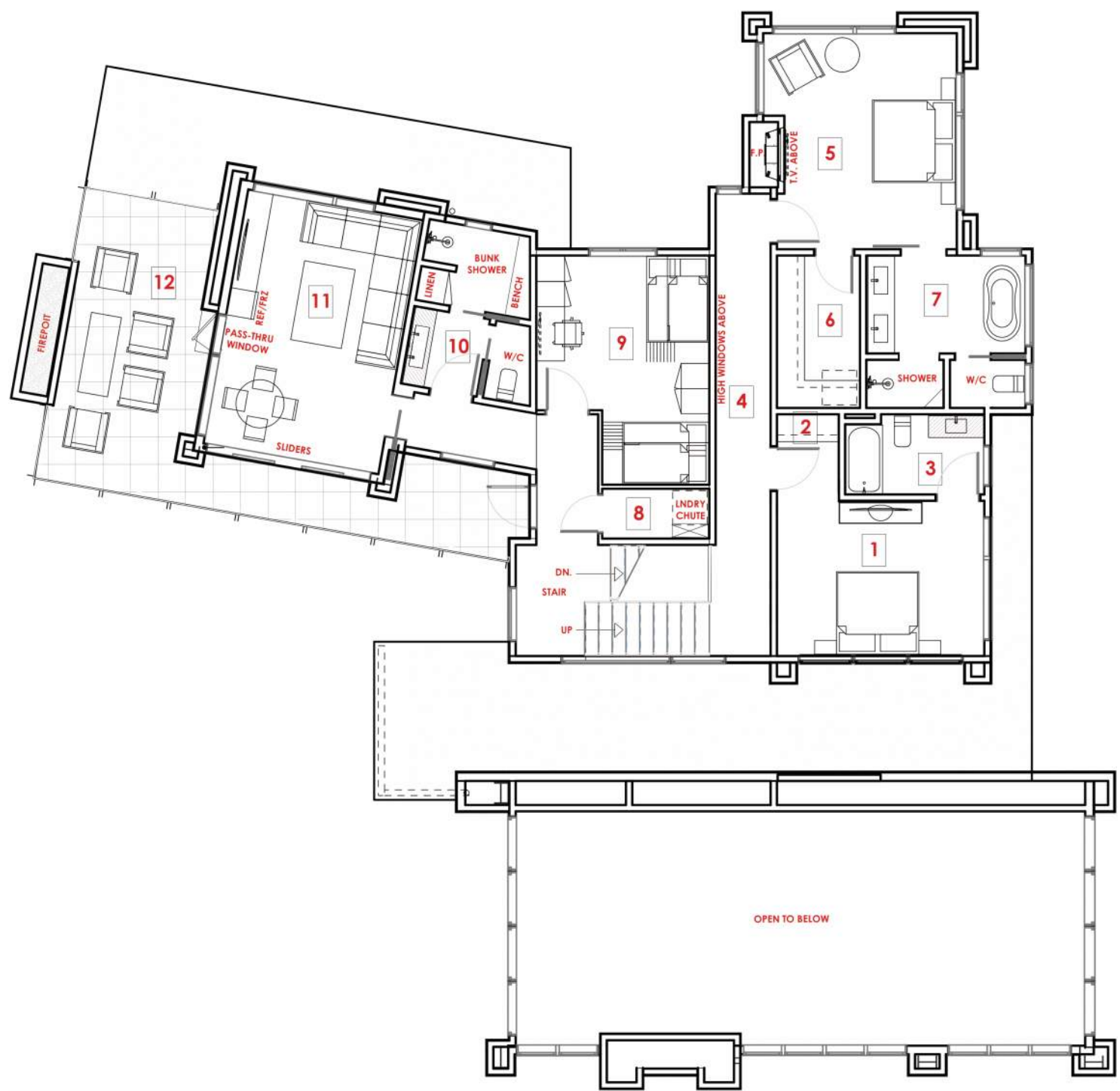
KELLY & STONE ARCHITECTS  
 STEAMBOAT SPRINGS, CO  
 LAKE TAHOE, CA  
 www.ksaarch.com  
 P.530.214.8896



**GLENNWOOD**  
 MOUNTAIN HOMES, INC.  
 LICENSE #981682

NOTE: THESE DRAWINGS ARE THE INTELLECTUAL PROPERTY OF KELLY & STONE ARCHITECTS AND MAY NOT BE USED WITHOUT EXPRESSED WRITTEN CONCENT OF KSlg. KSlg MAINTAINS OWNERSHIP AND COPYRIGHT. THESE GRAPHICS ARE CONCEPTUAL IN NATURE & SUBJECT TO FINAL DESIGN APPROVAL BY MARTIS CAMP DESIGN REVIEW AND MAY CHANGE ACCORDINGLY.

# UPPER FLOOR

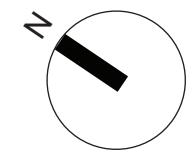
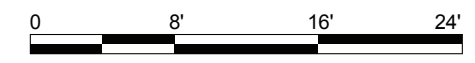


- 1 - BEDROOM #4
- 2 - BEDROOM #4 CLOSET
- 3 - BEDROOM #4 BATH
- 4 - HALLWAY
- 5 - MASTER SUITE #2
- 6 - MASTER SUITE #2 CLOSET/OPTIONAL W/D
- 7 - MASTER SUITE #2 BATH
- 8 - CLOSET
- 9 - BUNKROOM #5
- 10 - BUNKROOM/MEDIA #5 BATH
- 11 - MEDIA/VIEW LOUNGE
- 12 - FIRESIDE LOOKOUT DECK

### SQUARE FOOTAGE CALCS:

MAIN LEVEL FINISHED:	2,407 S.F.
UPPER LEVEL FINISHED:	1,754 S.F.
<b>TOTAL FINISHED:</b>	<b>4,161 S.F.</b>

OUTDOOR LIVING SPACE	1,394 S.F.
MECH & STORAGE	48 S.F.
GARAGE:	852 S.F.



**GLENNWOOD**  
MOUNTAIN HOMES, INC.  
LICENSE #981682

NOTE:  
THESE DRAWINGS ARE THE INTELLECTUAL PROPERTY OF KELLY & STONE ARCHITECTS AND MAY NOT BE USED WITHOUT EXPRESSED WRITTEN CONCENT OF KSlc. KSlc MAINTAINS OWNERSHIP AND COPYRIGHT.  
THESE GRAPHICS ARE CONCEPTUAL IN NATURE & SUBJECT TO FINAL DESIGN APPROVAL BY MARTIS CAMP DESIGN REVIEW AND MAY CHANGE ACCORDINGLY.

HOME 458  
MARTIS CAMP

**KS** ARCHITECTURE  
PLANNING  
INTERIORS  
KELLY & STONE  
ARCHITECTS  
STEAMBOAT SPRINGS, CO  
LAKE TAHOE, CA  
www.ksaarch.com  
P.530.214.8896